

PART OF THE S.W.1/4, OF SECTION 10, T.5N., R.2W., S.L.B. & M.
LANDMARK PLAZA CONDOMINIUMS

IN WEST HAVEN CITY

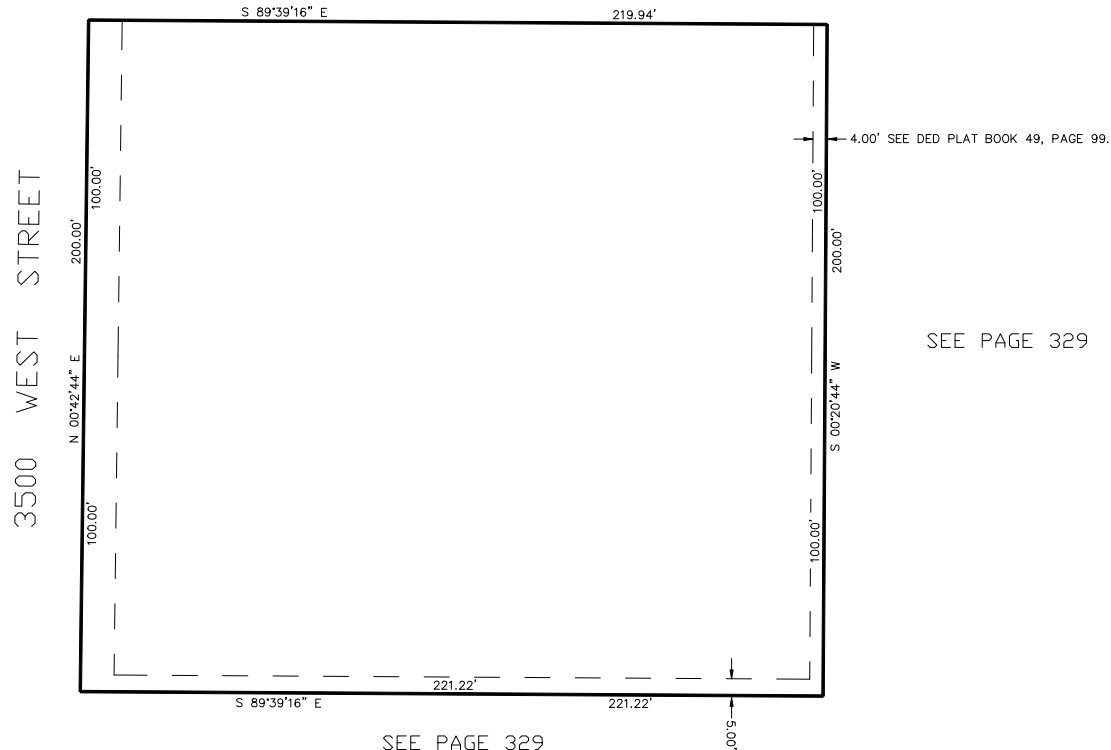
TAXING UNIT: 371

SCALE 1" = 30'

SEE PAGE 329

SEE PAGE 51-3

SEE PAGE 329



BUILDING NO.	UNIT NO.	SERIAL NO.	OWNERSHIP
A	1	083570001	EAGLE RISK MANAGEMENT INC
	2	083570002	MARK JENSEN
	3	083570003	CAMBRIDGE PROPERTIES LLC
	4	083570004	BRASSIE BEND PRDP LLC
B	1	083570005	MITCHELL D GODFREY & STACY L GODFREY TR
	2	083570006	B7 AN INDIVIDUAL SERIES OF CRAGUN HOLDING COMPANY A SERIES LLC
	3	083570007	B6 AN INDIVIDUAL SERIES OF CRAGUN HOLDING COMPANY A SERIES LLC
	4	083570008	M & D FAMILY TRUST DTD JAN. 1, 1990
BUILDINGS C & D & COMMON AREA VACATED #2602444			
LANDMARK PLAZA COND 1ST AMD. SEE P. 531			

10' UTILITY & DRAINAGE EASEMENTS EACH
SIDE OF PROPERTY LINES AS INDICATED
BY DASHED LINES EXCEPT AS OTHERWISE
SHOWN.

FOR COMPLETE ENG DATA SEE
ORIGINAL DEDICATION PLAT IN
BOOK 52, PAGE 19 OF RECORDS.

FOR TAX PURPOSES ONLY